

CHILDREN AND YOUNG PEOPLE'S SERVICES
PERFORMANCE REPORT
QUARTER 2 2023-24



Contents

1. Our Borough Strategy 2021-30 Priorities	3
2. Borough Strategy Priorities and the UN Sustainable Development Goals	4
3. Purpose of the Report	5
3. Executive Summary	6
4. Part 1 - Statistical analysis	7
4.1 Performance Against Target	8
4.2 The Performance Trend	8
4.3 Inter Authority Comparison	9
4.4 Summary and conclusion of statistical analysis	10
5. Part 2 - Commentary on performance against priority and outcome	11
Priority 1 - Ensure children and young people have a positive start in life	11

1. Our Borough Strategy 2021-30 Priorities

Performance Management in St Helens Borough Council is focused around achieving the 6 strategic priorities outlined in Our Borough Strategy 2021-30.



Priority 1 - Ensure children and young people have a positive start in life

Priority 2 - Promote good health, independence, and care across our communities

Priority 3 - Create safe and strong communities and neighbourhoods for all

Priority 4 - Support a strong, thriving, inclusive, and well-connected local economy

Priority 5 - Create green and vibrant places that reflect our heritage and culture

Priority 6 - Be a responsible council



2. Borough Strategy Priorities and the UN Sustainable Development Goals

The Sustainable Development Goals (SDGs) are a collection of 17 interlinked global goals designed to be a "blueprint to achieve a better and more sustainable future for all". The SDGs were set up in 2015 by the United Nations General Assembly and are intended to be achieved by the year 2030. Making progress towards the global goals by 2030 depends on local action. SDGs fit with Our Borough Strategy Vision and the Council's approach to Reset and Recovery. All 17 Sustainable Development Goals have been mapped against the 'Our Borough Strategy' priorities and outcomes.

 <p>ENSURE CHILDREN AND YOUNG PEOPLE HAVE A POSITIVE START IN LIFE</p>	     	 <p>SUPPORT A STRONG, THRIVING, INCLUSIVE AND WELL-CONNECTED LOCAL ECONOMY</p>	          
 <p>PROMOTE GOOD HEALTH, INDEPENDENCE AND CARE ACROSS OUR COMMUNITIES</p>	   	 <p>CREATE GREEN AND VIBRANT PLACES THAT REFLECT OUR HERITAGE AND CULTURE</p>	      
 <p>CREATE SAFE AND STRONG COMMUNITIES AND NEIGHBOURHOODS FOR ALL</p>	  	 <p>BE A RESPONSIBLE COUNCIL</p>	       

3. Purpose of the Report

The purpose of the report is to inform and update Elected Members on performance against the 6 priorities of the Our Borough Strategy 2021-30 and respective outcomes as set out above. The report covers the period Quarter 2 2023-24 providing the performance position reported over the course of the period. The reporting format splits the report into 2 distinct parts:

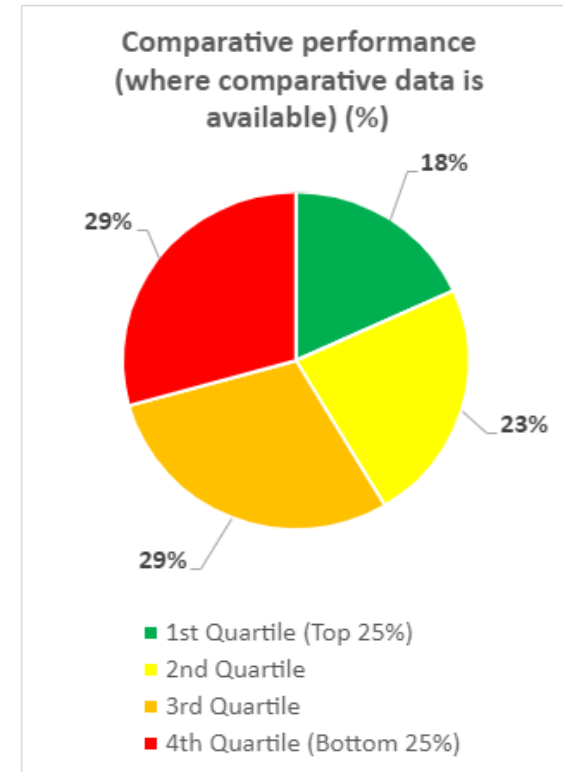
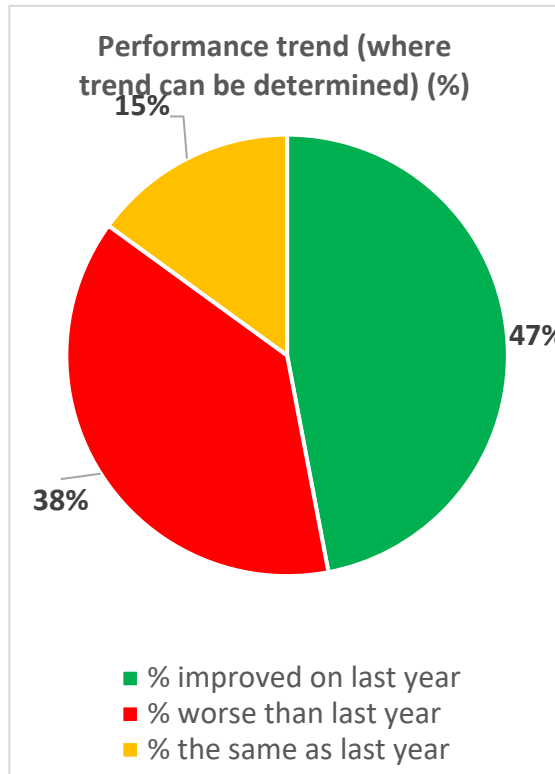
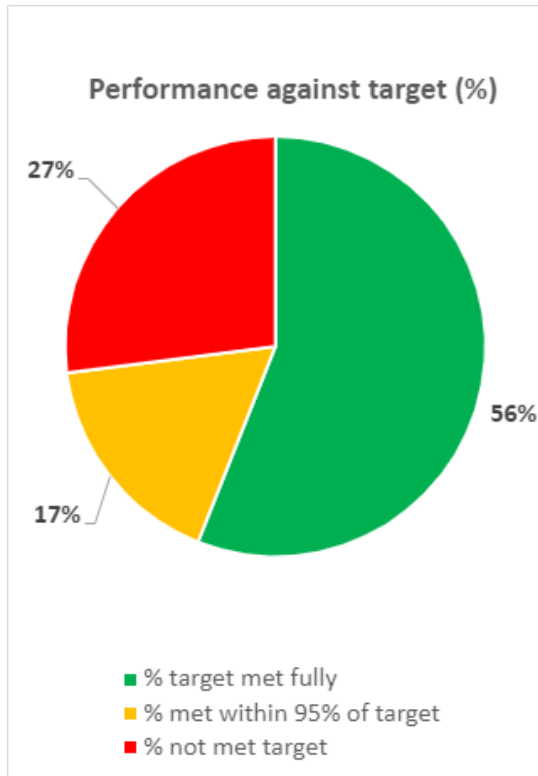
Part 1 of the report is a statistical analysis of the performance position at Quarter 2 2023-24.

Part 2 of the report is a commentary on performance against delivery of the 6 strategic priorities and their respective outcomes summarising current performance within the quarter and action being taken to improve performance where required.

3. Executive Summary

The charts below provide an overview position of all performance measures across all 6 Borough Strategy priorities as at Quarter 2 2023-24, examining:

- Performance against target.
- Trend - whether performance has improved / worsened since the position 12 months ago.
- Inter Authority performance - how St Helens' performance compares to that of a family group of authorities similar to St Helens.



4. Part 1 - Statistical analysis

To measure performance at Quarter2 2023-24, the Council is reporting against a total of 87 performance indicators, where targets were set. The indicators reported are split between Tier 1 and Tier 2:

Tier 1 – A set of high-level strategic indicators and targets that constitute the Outcomes Framework of the Borough Strategy 2021-2030.

Tier 2 – A further set of performance indicators and targets to address key priority areas of performance within Directorates / Departments.

In the supporting scorecards for each priority area, this distinction is maintained and both tiers are shown as they are all relevant to an understanding of overall performance.

The Quarter 2 report statistical analysis looks at performance under 3 areas:

1. Performance against targets
2. Trend over 12-months
3. Inter-authority comparison

4.1 Performance Against Target

This measure sets out:

- The percentage of indicators by priority where targets have been fully met or exceeded.
- The percentage of indicators by priority that have not fully met target but are within 95% of target.
- The percentage of indicators by priority that have failed to meet the target by more than 5%.

In the supporting scorecards for each priority area, green, amber, and red colours are used to depict indicators in each of the above three bullet point situations.

Priority	Number of Indicators with data	% target fully met	% target met within 95%	% target not met
1. Ensure children and young people have a positive start	22	41% (9)	32% (7)	27% (6)
2. Health, independence, and care	20	65% (13)	10% (2)	25% (5)
3. Safe and strong communities and neighbourhoods	14	64% (9)	0% (0)	36% (5)
4. Strong, thriving, inclusive and well-connected economy	8	63%* (5)	13%* (1)	25% (2)
5. Green and vibrant places reflecting our heritage and culture	10	50% (5)	20% (2)	30% (3)
6. Responsible Council	13	62% (8)	23% (3)	15% (2)
Total	87**	56%* (49)	17%* (15)	26%* (23)

* Percentages rounded to nearest whole number

** Some new indicators do not have targets set for the year as baseline data is being collected in 2023-24. See individual priorities for details.

A listing of indicators, which have met or exceeded target, have met within 95% of target, or have failed to meet target by more than 5% are shown within each of the 6 priority scorecards.

4.2 The Performance Trend

This measure compares performance at Quarter 2 2023-24 with performance at Quarter 2 2022-23 by setting out:

- The percentage of indicators where performance compared to last year has improved.
- The percentage of indicators where performance compared to last year has declined.
- The percentage of indicators where performance compared to last year is the same.

In the supporting scorecards for each priority a black arrow pointing up, downwards or sideways is used to depict indicators in each of the above 3 scenarios.

NB. There are a small number of indicators for 2023-24, where performance data in 2022-23 is not available and therefore it is not possible to show a performance trend. Where this is the case N/A appears.

Priority	Number of Indicators with data	% improved on last year	% worse than last year	% the same as last year
1. Ensure children and young people have a positive start	21	62% (13)	29% (6)	9% (2)
2. Health, independence, and care	20	50% (10)	35% (7)	15% (3)
3. Safe and strong communities and neighbourhoods	11	36% (4)	64% (7)	0% (0)
4. Strong, thriving, inclusive and well-connected economy	6	33% (2)	50%* (3)	17%* (1)
5. Green and vibrant places reflecting our heritage and culture	10	30% (3)	50% (5)	20% (2)
6. Responsible Council	13	46% (6)	23% (3)	31% (4)
Total	81	47% (38)	38% (31)	15% (12)

NB – *Percentages rounded to nearest whole number

4.3 Inter Authority Comparison

This measure shows how performance in St Helens compares to the performance of a family group of authorities similar to St Helens. It does this by ranking each authority's performance by quartile. The top performing 25 % are in the first quartile and the bottom 25% in the fourth quartile. Authorities in between are placed in either the 2nd or 3rd quartiles. Comparative national data is only available to be used for **42** indicators.

In the supporting scorecards for each priority, where this measure is used, green indicates that St Helens is in the top best performing quartile, red that it is in the bottom quartile or yellow/amber that St Helens is in either the 2nd or 3rd quartile). The England average figure (Eng, Av) is also now presented, as is the statistical neighbour group average (LA Av.) to provide additional context to comparative performance.

Priority	Number of Indicators with data	% in 1st quartile	% in 2nd quartile	% in 3rd quartile	% in 4th quartile
1. Ensure children and young people have a positive start	24	17% (4)	25% (6)	17% (4)	42% (10)
2. Health, independence, and care	10	20% (2)	20% (2)	50% (5)	10% (1)

Priority	Number of Indicators with data	% in 1st quartile	% in 2nd quartile	% in 3rd quartile	% in 4th quartile
3. Safe and strong communities and neighbourhoods	0	0% (0)	0% (0)	0% (0)	0% (0)
4. Strong, thriving, inclusive and well-connected economy	6	33% (2)	17% (1)	50% (3)	0% (0)
5. Green and vibrant places reflecting our heritage and culture	2	0% (0)	50% (1)	0% (0)	50% (1)
6. Responsible Council	2	0% (0)	0% (0)	50% (1)	50% (1)
Total	44	18%* (8)	23% (10)	29%* (13)	29%* (13)

NB – Percentages rounded to nearest whole number

The latest available picture of inter authority performance largely relates to the 2021-22 financial year. Therefore, St Helens position vis-a-vis its quartile position is based on St Helens performance in that particular year relative to its statistical neighbours. Future reports will be updated to reflect the 2022-23 comparative performance position as and when verified data is published.

4.4 Summary and conclusion of statistical analysis

- **74%** of indicator targets have been either exceeded, met fully, or met within 95% of target. This compares to 75% of indicators at Quarter 2 2022-23. (NB percentages rounded to nearest whole number)
- **26%** of indicator targets were not met, compared to 25% in Quarter 2 2022-23.
- The trend measure indicates over the course of the last 12 months **47%** of indicators showed improvement, **15%** of indicators maintained the same performance and **38%** of indicators showed a downward trajectory. The position in Quarter 2 2022-23 was that **56%** of indicators showed improvement, **5%** of indicators maintained the same performance and **39%** of indicators showed a downward trajectory.
- **18%** of all indicators where comparison is possible are in the top quartile, compared to 39% at Quarter 2 2021-22, whilst **29%** are in the bottom quartile, compared to 33% at Quarter 2 2022-23. 23% and 29% of indicators are in the 2nd and 3rd quartile respectively, compared to 10% and 18% in Quarter 2 2022-23 (NB percentages rounded to nearest whole number).
- Annual targets were set where possible within the context of national, Northwest, and local authority comparator group data. Equally targets aspire to be challenging but achievable within the context of the available resources. The targets also take account of performance during the last 3 years which has been an unprecedented period due to the onset and impact of the Covid-19 pandemic, a cost-of-living crisis, increasing demand for services and severe financial constraints.
- Performance should therefore be viewed within the context of what has continued to be a challenging operational period for the Council. The legacy impact of the pandemic, the cost-of-living crisis, rising demand for services and the requirement to deliver significant budget savings has impacted the Council's ability to meet targets and demonstrate improvements in performance trends. Equally in many areas the impact of the pandemic on performance is yet to be fully realised and understood. However, given the effect of the pandemic on St Helens to date there is the strong likelihood that existing inequalities may be widened. This presents risks for future performance, but particularly in areas such as public health, education and schools and children's services where comparative performance is already challenging.

5. Part 2 - Commentary on performance against priority and outcome

Priority 1 - Ensure children and young people have a positive start in life



Outcomes

- Children and young people are safe from harm and the lives of children in care improve
- Children and young people's aspirations, attainment and opportunities are raised
- Children and young people are healthy, resilient, confident, involved and achieve their potential

Overview of Priority Performance

The tables below provide an overview of performance at Quarter 2 2023-24 for the indicators reported

Performance Against Target

Number of Indicators with data	% target fully met	% target met within 95%	% target not met
22	41% (9)	32% (7)	27% (6)

The Performance Trend

Number of Indicators with data	% improved on last year	% worse than last year	% the same as last year
21	62% (13)	29% (6)	9% (2)

NB - figures rounded to nearest whole number

Inter Authority Comparison

Number of Indicators with data	% in 1st quartile	% in 2nd quartile	% in 3rd quartile	% in 4th quartile
24	17% (4)	25% (6)	17% (4)	42% (10)

NB - figures rounded to nearest whole number

Priority 1 - Ensure children and young people have a positive start in life

Tier 1

Outcome	Ref	Performance Indicator	Reporting Frequency	Higher / Lower is better?	22/23 Outturn	23/24 Target	Q1 June	Q2 Sept	% Variance from Target (SEP)	Trend	Comparative Performance
Children and young people are safe from harm and the lives of children in care improve	CYP-001	The number of open Early Help episodes starting	Quarterly	Higher	N/A	1500	421	741	-1.2%	↑	N/A
	CYP-002	The number of early help episodes that have been closed and have subsequently not gone on to have a social care intervention in the following 12 months as a percentage of total closures	Quarterly	Higher	87	87	73	73.4	-15.63%	↓	N/A
	CYP-003	Number of children in need at 31 March, per 10,000 children aged 0-17 years	Quarterly	Lower	440.7	440	451	474	-7.73%	↓	3rd Quartile Eng Av. 334.0 LA Av. 438.2 (2021/22)
	CYP-004	Rate of children subject to a Child Protection Plan per 10,000 under 18 year olds	Quarterly	Lower	76.2%	67	66.9	58.8	17.18%	↑	2nd Quartile Eng Av. 42 LA Av. 60.6 (2021/22)
	CYP-005	Percentage of children becoming the subject of a Child Protection Plan for a second or subsequent time.	Quarterly	Lower	25.1%	24%	25	21	12.5%	↑	4th Quartile Eng Av. 23.3 LA Av. 23.5 (2021/22)

St Helens Borough Performance Report - Quarter 1, 2022/23

Children and young people are safe from harm and the lives of children in care improve	CYP-006	Number of looked after children per 10,000 children within the Borough	Quarterly	Lower	129.3	127	127	134	-5.51%	↓	4th Quartile Eng Av. 70 LA Av. 108.6 (2021/22)
	CYP-008A	Percentage of Children Looked After ceased due to adoption	Quarterly	Higher	8%	10	10	11	10%	↑	2nd Quartile Eng Av. 10 LA Av. 10 (2021/22)
	CYP-008B	Percentage of Children Looked After ceased due to Special Guardianship Order (SGO)	Quarterly	Higher	26.8%	22	15	21	-4.55%	↔	3rd Quartile Eng Av. 13 LA Av. 20 (2021/22)
	CYP-009	Percentage of former care leavers aged 19-21 years with whom the LA is in touch	Quarterly	Higher	95%	97%	93	94	-2.08%	↓	1st Quartile Eng Av. 92 LA Av. 93.7 (2021/22)
	CYP-010	Percentage of former care leavers aged 19-21 in suitable accommodation	Quarterly	Higher	93%	99%	98	98	-1.01%	↑	1st Quartile Eng Av. 88 LA Av. 90 (2021/22)
	CYP-011	Percentage of former care leavers aged 19-21 years in employment, education or training	Quarterly	Higher	61%	63%	58	59	-3.28%	↑	2nd Quartile Eng Av. 55 LA Av. 53.5 (2021/22)
Children and young people's aspirations, attainment and	CYP-012	Percentage of Education, Health and Care (EHC) plans completed within a 20 week period	Quarterly	Higher	19.5%	30%	6.25	13.4	-55.33%	↓	4th Quartile Eng Av. 49.1 LA Av. 74.9 (2022)

St Helens Borough Performance Report - Quarter 1, 2022/23

opportunities are raised	E&S-001	The percentage of children attaining at least a 'Good' level of development in the Early Learning Goals.	Annual	Higher	60.9%	65%		64	-1.54%	↑	4th Quartile Eng Av. 49.1 LA Av. 63.9 (2021/22)
	E&S-002	The percentage of pupils at the end of Key Stage 2 achieving the national expected standard or higher in Reading, Writing and Mathematics	Annual	Higher	57%	60%	-	61	1.67%	↑	4th Quartile Eng Av. 59 LA Av. 59.4 (2021/22)
	E&S-005	Percentage of young people academic age 16-17 not in education, employment or training and not known combined	Quarterly	Lower	5.1%	5.3%	6.6	33.5	-97.1%	↓	1st Quartile Eng Av. 4.7 LA Av. 5.0 (2022)
	E&S-006	Percentage of state funded schools judged Good or Outstanding by Ofsted	Quarterly	Higher	89%	90%	90	90	0%	↔	2nd Quartile Eng Av. 88 LA Av. 84 (Dec 2022)
Children and young people are healthy, resilient, confident, involved and achieve their potential	PH-004	Under-18 conception rate per 1,000 females, 15-17 years (single year rate)	Quarterly	Lower	25.9%	28%	25.9	To be reported in Q3	N/A	↑	4th Quartile Eng Av. 12.8 LA Av. 19.1 (June 2021)
	PH-005	Percentage of infants being breastfed at 6-8 weeks	Quarterly	Higher	32.6%	31.6%	37.1	29	-8.23%	↑	4th Quartile Eng Av. 49.3 LA Av. 34.5 (2021/22)
	PH-008	Percentage of children aged 5 with MMR vaccination (2 doses)	Quarterly	Higher	88.1%	90%	85.8	85.7	-4.78%	N/A	4th Quartile Eng Av. 85.7 LA Av. 90.1 (2021/22)

St Helens Borough Performance Report - Quarter 1, 2022/23

	CYP-013	Number of first-time entrants to the youth justice system who receive their first substantive outcome or court disposal per 100,000 population aged 10-17	Quarterly	Lower	186	159	6	To be reported in Q3	N/A	N/A	1st Quartile Eng Av. 169.2 LA Av. 157.5 (2021)
	CYP-014	The percentage of children re-offending	Quarterly	Lower	31.9%	36%	28.6	To be reported in Q3	N/A	N/A	4th Quartile Eng Av. 35.6 LA Av. 31.3 (2019)

Tier 2

Outcome	Ref	Performance Indicator	Reporting Frequency	Higher / Lower is better?	22/23 Outturn	23/24 Target	Q1 June	Q2 Sept	% Variance from Target (SEP)	Trend	Comparative Performance
Children and young people are safe from harm and the lives of children in care improve	CYP-007	Percentage of children looked after at 31 March with three or more placements during the year	Quarterly	Lower	8%	9%	7.7	7.3	18.89%	↑	2nd Quartile Eng Av. 10.0 LA Av. 10 (2021/22)
	PH-006	Smoking status at the time of delivery	Quarterly	Lower	13.7%	12%	15.3	-	-%	↓	3rd Quartile Eng Av. 9.1 LA Av. 12.2 (2021/22)
Children and young people are healthy, resilient, confident, involved and achieve their potential	PH-007	Under 18 admissions to hospital for alcohol specific reasons per 100,000 population	Quarterly	Lower	66.1% (Q3 - 2022-23)	68	62.5	58.9	13.38%	↑	4th Quartile Eng Av. 29.3 LA Av. 40.1 (18/19-20/21)

St Helens Borough Performance Report - Quarter 1, 2022/23

	PH-009	Percentage of children who received a 2-2.5 year Healthy Child Programme review by the time they were 2.5	Quarterly	Higher	82.7%	84%	90.5	88	4.76%	↑	3rd Quartile Eng Av. 74.0 LA Av. 86.4 (2021/22)
	PH-010	Percentage of children achieving a good level of development at 2-2 1/2 years	Quarterly	Higher	86.2%	85%	85.1	85.9	1.06%	↑	2nd Quartile Eng Av. 80.9 LA Av. 80.3 (2021/22)

Summary of performance against outcome and action for improvement

Outcome – Children and young people are safe from harm and the lives of children in care improve

Current Performance

- Performance against the outcome showed a mixed picture at Quarter 2 with some improvements shown but also some ongoing challenges in the area of Children’s Social Care.
- **CYP-001** – Over the first 2 Quarters 2023-24 a total of 741 early help episodes were initiated across the St Helens partnership. The most common reasons for an early help episode starting in the period were related to Parenting Capacity (29% of episodes started), Domestic Abuse (14%), SEND (12%) and Emotional Wellbeing support (8%). The majority of episodes initiated in the period were led by the Council’s dedicated Early Help Team (55%) with education providers and schools being the next largest (30%) contributor of episodes initiated in the period. The number of episodes started in the period (741) is broadly the same as that reported in the April-Sept period of the previous year (732).
- **CYP-002** - 74% of all Early Help Episodes that ended in Q2 last year did not subsequently go on and have a Social Care referral in the subsequent 12 months. This is a 1% improvement on Quarter 1 and means that the total for the year is 73.4% currently behind the ambitious target of 87%.
- **CYP-003** -, Over the first 2 quarters 2023-24 a total of 1,751 children and young people were open to St Helens Children's Social Services, a rate of 474 per 10,000 under 18-year-olds. The number of children open to St Helens Children's Social Cars has increased from 1,638 on the 31st of March 2023 to 1,751 on the 30th of June 2023, an increase of 6.8% over the period. In the same period last year there was a total of 1,702 open to St Helens Children's Social Care. The rate of Children In Need per 10,000 0-17 population reported for St Helens continues to above comparable regional and national averages.
- **CYP-004** - On the 30th of September 2023, a total of 217 children and young people were the subject of a Child Protection (CP) Plan and supported by St Helens Children's Social Services, equating to a rate of 58.8 children per 10,000 under 18 year olds. The number of children the subject of a CP Plan has decreased from 280 children reported at 31st March 2023 to 217 on the 30th of September 2023, a decrease in the CP population of 23%

over the period. At the end of September 2022 St Helens' CP rate stood at 66.2 children per 10,000 under 18 year olds. However, the rate of children subject to a Child Protection Plan continues to be higher than the most recent published (2021-22) comparable regional (49) and national (42) rates. The majority of children supported with a CP Plan on the 30th of September 2023 are supported due to concerns related to Neglect (55%), Emotional abuse (24%) or Physical abuse (16%).

- **CYP-005** – Over the course of the first 2 quarters 2023-24, a total of 107 children became the subject of a Child Protection (CP) Plan, with 24 of the children (or 21%) becoming the subject of a Child Protection Plan for a second or subsequent time. The percentage of children becoming the subject of a Child Protection Plan for a second or subsequent time, is now better than the local target (24%) and the position reported at the end of the previous financial year (23%). The latest position is also an improvement on the 24.6% of children becoming the subject of a Child Protection Plan for a second or subsequent time over the course of the first 2 quarters in 2022-23, and in line with the last published national average of 23.3%.
- **CYP-006** - At the end of Quarter 2 2023-24, a total of 495 children and young people were cared for by St Helens Council, equating to a rate of 134 children per 10,000 under 18-year-olds. The number of Children Looked After (CLA) reported for St Helens on the 30th of September 2023 is higher than both the 469 reported at the end of March 2023, and the 472 at the end of Quarter 2 2022-23. The latest CLA population rate reported for St Helens (127) continues to be higher than the most recently published (2021-22) comparable regional (97) and national (70) CLA population rates.
- **CYP-008A** - Over the course of the first 2 quarters 2023-24, a total of 66 children and young people have been discharged from care with 7 of the children discharged due to adoption, equating to 11% of total care discharges in the period. The percentage is broadly similar to the position reported over the course of the first 2 quarters in 2022-23 (9%) and in line with comparable regional (10%) and national (10%) positions.
- **CYP-008B** - Over the course of the first 2 quarters 2023-24, a total of 66 children and young people have been discharged from care with 14 of the children discharged due to a Special Guardianship Order (SGO), equating to 21% of total CLA discharges in the period. The percentage of CLA discharges via SGO in the period (21%) is the same as that reported over the course of the first 2 quarters in 2022-23, and above the last published comparable regional (16%) and national (13%) positions.
- **CYP-009-010-011** - Performance against the 3 key outcome indicators for care leavers, that being care leavers in suitable accommodation, care leavers the local authority is still in touch with, and care leavers in employment education and training remains comparatively strong, being above last published England and statistical neighbour averages. All 3 indicators are marginally below target at the end of Quarter 2 2023-24. The indicator for care leavers in employment education and training has marginally increased over the course of Quarter 2 2023-24, whilst the indicators for care leavers in suitable accommodation, and care leavers the local authority is still in touch have dipped slightly.
- **CYP-007** - In the 12-month period up to and including September 2023, a total of 36 children and young people experienced three or more placement moves in the previous 12-month period, equating to 7.3% of the total CLA population supported by St Helens' Children's Social Care. Current performance is better than the target of 9%, as well as the full 2022-23 performance reported for St Helens (8.3%) and the most recently published national (10%) and regional average for 2021-22 (9%)

Action for Improvement

- **CYP-001 / CYP-002** - Quarter 2 states the number of children receiving Early Help services has slightly improved. However, we recognise that there is much work to do to improve our Early Help offer to reduce the demand for specialist services. New governance and oversight arrangements via an Early Help Board are in progress to strengthen the Early Help partnership offer across St Helens. This work along with the Supporting Families

Programme and the transformation to Family Hubs (with additional funding) will assist in earlier identification of needs and support within communities avoiding more intrusive statutory services.

With regard to the number of open Early Help episodes starting, Having engaged with partner agencies to establish the reasons for the decrease in early help activity the main reasons cited relate to difficulties with the Early Help Assessment Document (EHAT). Partner agencies report that the document is not user friendly and that it's too long and overly technical which they find a barrier to completion which in turn has contributed to a reduction in early help activity. In response to this, the council have taken the lead as part of a multiagency group to review the existing assessment document and to design an alternative. A revised assessment document will be presented to the strategic early help board for approval on the 15 January 2024. In addition, there is now a greater emphasis applied to understanding agency specific data to assist in identifying specific levels of partnership engagement in early help activity. Once this is understood in more detail it will enable the council through its partnership coordinators to target specific partners whose activity is low in order to provide dedicated support and challenge to improve activity.

With regard to the number of early help episodes that have been closed and have subsequently not gone on to have a social care intervention in the following 12 months, to understand the reasons as to why this indicator is below target it is necessary to obtain a deeper analysis of data relating to wider partnership activity outside of that of the council's early help team. Doing this it will assist us in understanding the source of the referrals back into social care over the 12 month period following an episode of early help. Once this and any trends and themes can be identified it will enable the targeting of partner agencies to receive dedicated support from partnership coordinators who will review the quality of assessment and planning to help improve the quality of practice as well as future performance.

- **CYP-003** - We have seen an increase in the numbers of children defined as Children in Need (CIN) compared to the last quarter and same time last year. This reflects the high prevalence of neglect and relates to the need to continue to strengthen early help provision and prevent concerns escalating. We are continuing to strengthen our response to CIN, especially recognising and intervening in neglectful parenting. Monitoring systems are in place to ensure CIN work is being improved to prevent escalation to Child Protection plans. It is notable that CP plans have significantly reduced. Neglect remains the primary focus of the CSP. It is agreed that a key priority is to reduce the demand for statutory service this is being included in the updated SEF and plans are in progress to secure an LGA peer review and apply for the Families First Pathfinder programme that would secure additional funding to help redesign our services to strengthen family help.
- **CYP-006** - Our CLA (Children Looked After) population continues to be high, and our numbers remain above our comparators. We have put in place robust monitoring to scrutinise decision making when children enter care. We have plans to further develop our Edge of Care offer over the next 12-months. We have seen an increase in UASC (Unaccompanied Asylum-Seeking Children) this now forms 5% of our CLA population and is impacting on the number of Care Leavers. This is recognised as an area of risk as we have limited ability to refuse this cohort when there are age disputes. We have developed our tracking systems to ensure permanency is achieved and that exits from care are timely. Some protracted court cases have impacted on this figure during 2022-23 and have carried over into 2023-24. More timely court proceedings are impacting on this figure as we progress through 2023/24. We are predicted to see an increase in the number of children exiting care to adoption and Special Guardianship Orders (SGOs)

within the next few months. Feedback from inspectors during the Ofsted ILACs Inspection was positive in relation to our performance management rigour via tracking systems and processes

- **CYP-011** -Whilst there has been a slight dip in Quarter 2 on the number of care leavers who are in employment, education, and training (EET) we are confident that we have effective systems in place to support these young people and will continue to address this with enthusiasm and rigour. Inspectors were complimentary about our approach to EET, and we remain confident that the annual target is achievable for this indicator.

Outcome - Children and young people's aspirations, attainment and opportunities are raised

Current Performance

- The majority of indicators under this outcome relate to the attainment of children and young people and are only published annually.
- **CYP-012** - Performance for the completion of Education, Health, and Care Plans (EHCPs) to timescale started to improve in Q2. 82 EHCPs were completed, 11 of which were within 20 weeks. Performance now stands at 13.4% which is still well below target. St Helens comparative performance from 2022 is now bottom quartile. This is due to the current backlog of overdue cases carried forward from the previous year.
- **E&S-001** - At the end of the 2022-23 academic year, 64% of pupils educated in a St Helens schools achieved a 'Good Level of Development (GLD)' at the end of the early years foundation stage (Reception year). The percentage of reception year pupils in St Helens achieving a good level of development in 2023 (64%) is above that achieved in the previous year (61%), an increase of three percentage points. The 2023 regional and national averages are not yet available but are scheduled to be published in late October 2023.
- **E&S-002** - At the end of the 2022-23 academic year, 61% of pupils educated in a St Helens schools achieved the expected standard in Reading, Writing & Mathematics (RWM), an increase of 4% on the performance achieved in the previous year (57%). Positively, the latest performance reported for St Helens (61%) is above the local target for the year (60%) and above the comparable national average (59%).
- **E&S-005** - As with previous years, September represents the most challenging month for NEET data analysis, as young people are tracked as they engage with a post 16 offer, and we attempt to analyse the data from a large number of post 16 institutions or training providers. The 16-17-year-old combined NEET and Not Known performance at the end of September (Quarter 2) was 33.48%. This is almost double the reported figure for September 2022 (17.4%). NEET for 16-17-year-olds is 3.7%, representing 153 young people, which is an increase of 0.4% from last year of 3.3%.

However, there has been a significant increase in the number of 16-17-year-olds whose destinations are Not Known which is currently 29.8% representing 1234 young people. This is made up of 529 (16-year-olds) and 705 (17-year-olds) compared to 20 and 114 respectively in 2022, which highlights an increase in the 16-year-old cohort.

There is a similar picture in the numbers of young people aged 16/18 in education, employment or learning with those NEET at 5.2% (against 4.2% for the same period last year). The drop in performance in respect of not known is due to late reporting of enrolments this September by a number of

post-16 education providers. As a result, an accurate picture has not been available in the current quarter, but a more accurate picture will be available by the end of October. It is anticipated that the increasing trajectory for those NEET will continue this academic year.

- **E&S-006** - At the end of September 2023, a total of 63 state funded schools (Nursery Schools, Primary Schools, Secondary Schools, Special Schools, and Pupils Referral Units) in St Helens are judged by Ofsted to be good or better for overall effectiveness, equating to 90% of all state funded schools in St Helens. There are 16 schools that are currently judged by Ofsted to be outstanding and a further 47 schools that are judged to be good. The position reported for St Helens at the end of June 2023 is marginally above both the comparable national (88%) and the regional NW (89%) average.

Action for Improvement

- **CYP-012** - To address the performance challenges in the timeliness of EHCP's, the risk has been added to the corporate risk register and a recovery plan has been produced. The service has undergone a period of recruitment to fill vacancies, and further recruitment is planned. Performance was however impacted by the cyber incident which resulted in the Capita system being down for over 4 weeks, which meant that EHCPs could not be drafted or issued, professional advice could not be uploaded to the system etc. There is therefore a backlog of loading cases onto the system. Cases continue to be risk assessed and prioritised to ensure that the most vulnerable pupils needs are assessed. The challenges are regularly communicated to all partners, including parent carers.
- **E&S-005** - The increase in not known is as a result of late reporting by a number of post 16 providers this year. This has now been addressed and all information has been received. As a consequence, this has significantly reduced this number. This will be reported in Q3. The increase in NEET continues to present a challenge to a number of LAs across LCR. Discussions between LAs leads and the CA have been productive, and solutions are being sought to the lack of engagement programmes for young people at risk and the CA have now engaged with the ESFA. In the absence of local online learning provision, arrangements for some young people have been made with a national provider and St Helens College has worked to develop a pre-engagement programme and 10 young people are now involved with this. September Guarantee performance remains strong with 98% of 16-year-olds and 92.6% of 17-year-olds with a guaranteed placement.
- **E&S-006** - As described in the School Effectiveness Strategy, schools will be supported to attain at least 'Good' status when inspected by the Ofsted as the external regulator. The School Effectiveness team continues to analyse all data (GLD, Phonics, KS1, KS2, KS4, attendance, suspensions, and exclusions) and tailor support to all maintained schools accordingly. Where there are issues with an academy school's performance, this will be raised with the school's headteacher and relevant executive officer within the trust. Good and Outstanding schools will be encouraged to take responsibility for their own improvement as well as receiving a core of support from the Local Authority. The core offer for all schools includes access to headteacher briefing sessions, Learning Partnership, Governors' Forum, comprehensive CPD / training package for all schools, access to TESSA (Triage for education support and specialist advice), support / challenge linked to monitoring and moderation duties (completed and quality assured during Summer 23 and will be repeated in the new academic year) and support from statutory services such as Virtual School and SEND. Where schools are vulnerable for not maintaining / achieving at least a 'Good' outcome, a banded package of specialist advice and support is offered through the School Effectiveness Team. This can involve Achievement and Improvement Boards, bespoke school reviews and use of specialist consultants. Schools are sent a weekly bulletin from across all services within Education and Learning. This bulletin allows information from the LA, DfE, Ofsted and other key partners to be disseminated to schools, thus strengthening information sharing and aiding compliance.

Outcome - Children and young people are healthy, resilient, confident, involved and achieve their potential

Current Performance

- Performance within the outcome of improving children's health and resilience continued to remain challenging in areas, but also shows areas of improvement.
- **PH-004** – Further data on the under-18 conception rate has yet to be published following the data reported within the Performance Outturn Report 2022-23. The Office for National Statistics have stated that data will be updated in early November. Therefore, the latest figure still relates to Quarter 4 December 2021 where the rolling 12-month rate for St. Helens was 25.9 conceptions per 1,000 females aged 15-17. This was higher than the England and North West rates of 13.1 and 16.4 per 1,000 respectively. In Quarter 4 (Dec 2021) St. Helens had the 7th highest rate in England, which was a reduction from 4th highest in Quarter 2 and 5th highest in Quarter 3.
- **PH-005** – Historically, St Helens has had low rates of breastfeeding. Data for Quarter 2 2023-24 shows that 29% of infants being breastfed at 6-8 weeks in St. Helens, which is below the target of 32%. This is a reduction on the previous quarter's figure of 37, but similar to the 29% recorded in Quarter 2 2022-23. St Helens breastfeeding rate is significantly lower than the England and North West figures of 49.5% and 43% respectively.
- **PH-006** – St Helens has continued to have a comparatively high percentage of expectant mothers smoking at the time of delivery. Quarter 2 data is not yet available. The most recently published quarterly data on smoking status at the time of delivery relates to Quarter 1 2023-24 where 12.2% of mothers in St. Helens were known to be smoking, this is lower than the previous two quarters. Also published are the verified annual figures for 2022-23 which showed that 13.7% of mothers were smoking at the time of delivery in St Helens over the year. This figure is much higher than the 2022-23 annual figures for England and the North West which were 8.8% and 10.3% respectively.
- **PH-007** – Alcohol related hospital admissions among under-18s in St Helens have shown some improvement, however rates remain very high. The most recently published rolling three-year rate of alcohol specific hospital admissions among under 18s relates to Quarter 1 2023-24. The rate was 58.9 admissions per 100,000 under 18s. The most recent rate is a reduction from the previous quarter's data of 62.5 per 100,000 (pertaining to 74 admissions over the three-year period). Comparator data is only available for the 2019-21 where St. Helens' rate of 81.4 was significantly higher than the England and North West rates of 29.3 and 40.1 per 100,000 respectively.
- **PH-008** - The most recently published data for the percentage of children aged 5 have had 2 doses of the MMR vaccination relates to Quarter 1 2023-24 which showed that 85.7% of children in St Helens had 2 doses of the vaccine. This is in line with the previous quarter's data. MMR Vaccine uptake rates in St Helens have remained below the critical threshold of 90% for a number of years (including pre-pandemic). However, St Helen's MMR2 vaccine uptake rate at 5 years is currently slightly higher than the national average.
- **PH-009** - The percentage of children in St. Helens who received their 2 - 2.5-year review by the time they were 2.5 during Quarter 2 2023-24 was 88%. Performance has improved on the Quarter 2 2022-23 figure of 64.7%. St Helens' performance is better than target and compares favourably to the England and North West averages of 75.3% and 78.6% respectively.

- **PH-010** - The percentage of children achieving a good level of development at 2 - 2.5 years in St. Helens during Quarter 2 2023-24 was 85.9%, which is better than target and higher than the England and North West averages of 80% and 79.4% respectively.
- **CYP-013** – Quarter 2 data for first time entrants to the Youth Justice System is time lagged and will be reported in Quarter 3. Over the course of Quarter 1 2023-24, one young person in St Helens became a first-time entrant to the Youth Justice System, which equates to a rate of 6 per 100,000 10–17-year-olds and shows a significant drop on the same period in the previous year. In Quarter 1 2022-23 St Helens had 5 young people become a first-time entrant which equated to a rate of 30 per 100,000 16–17-year-olds.
- **CYP-014** – Quarter 2 data for levels of youth offending is time lagged and will be reported in Quarter 3. Levels of youth reoffending have historically been St Helens' Youth Justice Service's biggest challenge. The latest recorded reoffending figure for St Helens, published by the Youth Justice Board for a 12-month rolling cohort from June 2020 - July 2021 was 28.6%. This is a significant reduction on the previous year's data which showed reoffending levels of 44%. Published data is from Police PNC/ Ministry of Justice and is time-lagged by 2 years.

Action for Improvement

- **PH-004** – Plans are in place to re-establish the local teenage pregnancy steering group during autumn, and links have been made to the newly established C&M Teenage Pregnancy Forum to provide vital system leadership and support. The Teenage Action Zone (TAZ) small team continues to provide drop in clinics (Millennium centre) and targeted education support to young people, schools and frontline services regarding campaigns, training, advice and guidance, and plans are progressing to increase access to a range of contraceptive offers via primary care and the integrated sexual health service based at the hospital.
- **PH-005** - The proportion breastfeeding reduced this quarter due to reduced capacity, thought due to staffing vacancies in the Specialist Infant Feeding Service. Whilst there has been an increase in referrals for more specialist support, there was reduced capacity for outreach engagement work. Recruitment is now underway, and plans are in progress to develop the antenatal pathway, with co-production work currently being led through the Integrated Care Partnership to increase breastfeeding as a system. Improvement plans include increasing breastfeeding planning and education for pregnant mum before baby arrives; extend support on the maternity wards to 7 days per week (currently 3-4 days); review of out of area hospital discharge referrals processes to the local Infant Feeding Team, and further analysis of data recording and performance reporting processes in partnership with the 0-19 Healthy Child Programme service.
- **PH-006** - The latest data on smoking in pregnancy shows an encouraging reduction compared to the previous two quarters, but rates remain above target, and above regional and national averages for smoking at the time of delivery. The hospital continues to develop the Tobacco Dependency Programme, and bespoke training is being provided for midwives to ensure supportive conversations about smoking and its harms and implementing the opt out pathway. Work is underway to further develop electronic referral pathways to ensure links with the local community stop smoking service offer. In addition, there has been a national announcement in October about potential additional funding to enhance the local stop smoking services as part of the 'stop the start' ambition, and this may enable us to review and enhance our local offer.
- **PH-007** - Young people's alcohol admissions continue on a general downward trend, although still high compared with the latest known figures for England and North West. The councils Young Peoples Drug and Alcohol team (YPDAAT) have reviewed the data in detail with Public Health to understand which young people are most at risk so that they can better provide support. At risk groups generally include those who have already attended hospital, Children Looked After or a child in need, those in contact with the criminal justice system, those suspended or excluded from school,

and young people affected by domestic abuse, mental ill health, or the use of alcohol/drugs by a close family member. Local intelligence suggests those who attend hospital for alcohol specific reasons are largely young people experiencing emotional distress and there is a strong link with self-harm. Pathways from A&E in to the YPDAAT have been strengthened in partnership with the acute hospital trust and referrals are now increasing, meaning more young people are getting the support they need. A multi-agency task group was set up in August to look at strengthening the wider multi agency approach to support those young people.

- **PH-008** - As part of the UK routine schedule children should have received two doses of MMR vaccine by the age of 5 years. We are making efforts to improve uptake given the national increase in measles cases. Local communications are also being developed to raise awareness. This includes leaflets, posters and 'pop-ups' for Childrens Centres, nurseries, and GP surgeries. Engagement work is planned with local GP practices with the lowest reported MMR uptake rates to understand challenges and issues and funding has been assigned to support practices with possible interventions to make improvements to the MMR uptake. Children staying in initial accommodation in St Helens are also being offered MMR vaccination as per UK routine vaccination schedule as part of an NHS England commissioned pilot.
- **PH-009** - The 0-19 Healthy Child Programme service has continued to perform above target, for two consecutive quarters. This child development review indicator is important as it can help inform parents about school readiness and identify young children with SEND to ensure early identification and additional support can be put in place at the earliest opportunity. As such, this indicator continues to be closely monitored and quality audits are undertaken to understand any exceptions.
- **PH-010** - Data for this quarter is an improvement since the last report, and performance is above the local target. The 0-19 Healthy Child Programme service are working closely with Children's Services Early Years to develop the integrated (Health and Education) two-year review and a pilot is underway to implement the more in-depth ELIM (Early Language Identification Measure) assessment tool, as a key early intervention review to identify and provide additional support for any speech, language, and communication issues.

For more information about individual performance indicators that support the achievement of these outcomes please see the scorecard